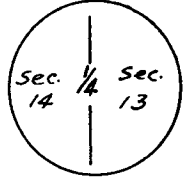


CERTIFIED LAND CORNER RECORDATION

T 19 N, R 70 W

DESCRIPTION OF CORNER EVIDENCE FOUND, AND ORIGINAL RECORD (If known)

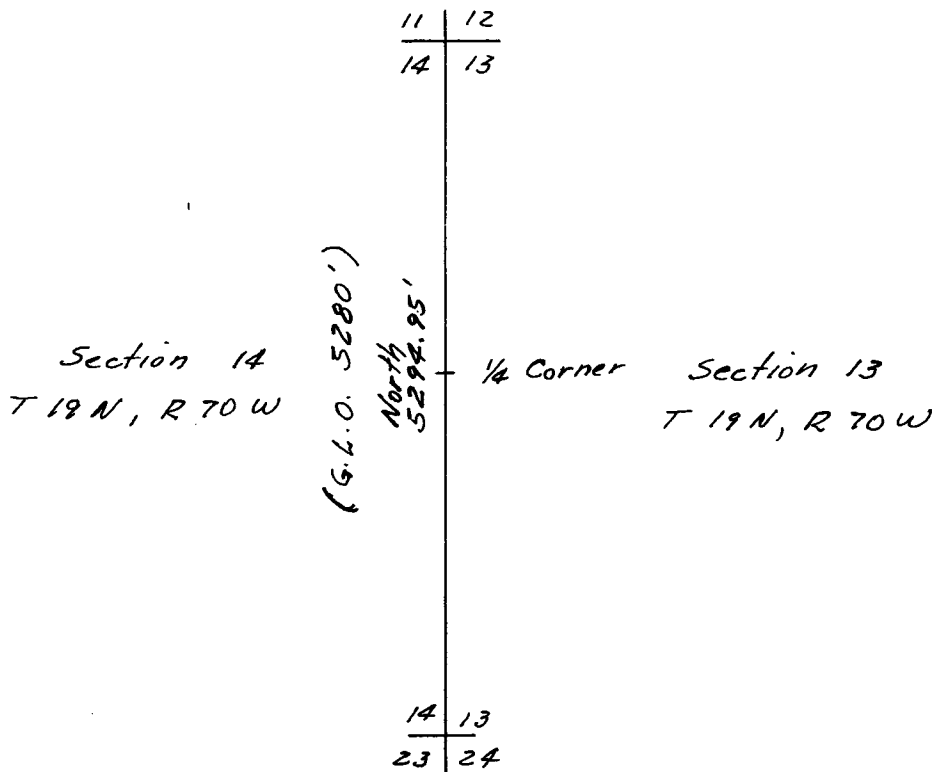


No evidence of the original monument was found which is described as a limestone 12" X 12" X 6" set 9" deep with 1/4 marked in west side.

DESCRIPTION OF MONUMENT AND ACCESSORIES ESTABLISHED TO PERPETUATE THE ORIGINAL LOCATION OF THIS CORNER:

None

SKETCH, WITH COURSE AND DISTANCE TO ADJACENT CORNER IF DETERMINED IN THIS SURVEY. (May Sketch or Paste Reproduction on Reverse Side.)



I, Edward C. Fry certify that I have carefully performed or reviewed the work done on the diagrammed corner as reported on this recordation form and approve the same.

Edward C. Fry P.E./L.S. 662 Signature of Surveyor Registration No.

STATE OF WYOMING,

Office of Clerk and Recorder,

County of Teton

594252

OCT 2 1980

This "corner record" was filed for record on the day of , 19, was noted on the cross-index plat and is assigned page No., in book No.

Janet C. Whitehead County Official

Cross Index No. T. R. Mer. 231 T. 17 R. 70 Mer. T. R. Mer. T. R. Mer. T. R. Mer. T. R. Mer.

Photographed Indexed Posted Assessor